

SHIP'S PARTICULARS

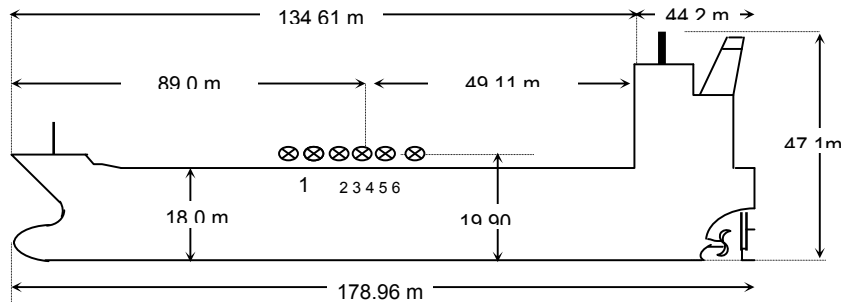
NAME	CHEM FAROS
CALL SIGN	V7QX6
FLAG	Marshall Islands
PORT OF REGISTRY	Majuro
OFFICIAL NUMBER	3459
IMO/LLOYDS NUMBER	9129275
CLASS SOCIETY	DNV
CLASS NOTATION	.+1A1 ICE- 1C (FOR MAX DFT 11.35M) TANKER OIL / CHEMICAL ESP ECO
P & I CLUB	WEST OF ENGLAND

KEEL LAID	29-Δεκ-93
LAUNCHED	N/A
DELIVERED	4-Iouλ-96
SHIPYARD	KHERSON SHIPYARD,UKRAINE

SATELLITE COMMUNICATION		
		INMARSAT-C
E-MAIL	chem.faros@amosconnect.com	
PHONE	(870)764890918	
FAX	(870)764890919	
TELEX	453833695	453833696
MMSI	538003459	
EX. NAMES	Chem Clover	
CS / FLAG	MALTA	

OWNERS	CONQUESTVENTURE MARITIME S.A. PANAMA
OPERATORS	C.S.MARITME S.A.

PRINCIPAL DIMENSIONS	
LOA	178.96 m
LBP	164.71 m
BREADTH (Extreme)	25.30 m
DEPTH (molded)	15.0 m
HEIGHT (maximum)	47.1m
BRIDGE FRONT - BOW	134,61 m
BRIDGE FRONT - STERN	44.2 m
BRIDGE FRONT - M'FOLD	49.11 m



TONNAGE	REGD	SUEZ
NET	11177	18251
GROSS	21145	22314
GROSS Reduced (R'n:13495)	17793	

TANK CAPACITIES (cbm)					
CARGO TANKS (98 %)			BLST TKS (100 %)		
1Ws	3302,0	SLOP Ws	1250,0	F.P.Tk.	936,0
2Ws	5535,0	F.W Tanks	100%	WBT 1Ws	2514,0
3Ws	5750,6	TCFW TK (P)	550,5	WBT 2Ws	1466,0
4Ws	5750,6	TCFW TK (S)	550,5	WBT 3Ws	1328,0
5Ws	5750,6	FW TANK 1 (P)	89,5	WBT 4Ws	1328,0
6Ws	5731,0	FW TANK 2 (P)	123,4	WBT 5Ws	1328,0
7Ws	4261,0	DRNK FW TK (P)	44,5	WBT 6Ws	1916,0
8Ws	0,0	DRNK FW TK (S)	30,1	Afterpeak	473,0
9Ws	0,0	B. WATER TK (S)	73,8	Bl/ cannal	236,0
TOTAL	36080,8	TOTAL	1462,3	TOTAL	11525,0

LOAD LINE INFORMATION	FREEBOARD	DRAFT	DWT
TROPICAL	5.46m	12.55m	33.528
SUMMER	5.716m	12.30m	32.490
WINTER	5.972m	12.04m	31.452
LIGHTSHIP	14.6m	3,40m	0
NORMAL BALLAST COND	11,40 m	6.60m	11.551
SEG. BALLAST COND	11,40 m	6.60m	11.551
DWT WITH SBT ONLY			11.551
FWA		272 mm	
TPC @ Summer draft		39,3	

OTHER DETAILS	
H. Level Alarm	95%
Overfill Alarm	98%

MACHINERY / PROPELLER / RUDDER	
MAIN ENGINE	MAN B&W 6L60MC
M.C.R.	8380 KW @ 114 RPM
N.C.R.	7943 KW @ 111 RPM
MAX CRITICAL RANGE	60-62 / 78-80 RPM
AUX. BOILER	Rated output 6.3 /6.3 tons/hour
GENERATOR (3 sets)	3 x 925 KW @ 750 RPM
EMER D.G.	1 x 200 KW, @ 1500 RPM
PROPELLER	4-Blade, Fixed pitch, D=5732 mm
RUDDER	Semi-blanced, 17.0 M2
STEERING GEAR	Cylinder type
FW GENERATOR CAP	RUSSIA, 1.0 MT/H

BUNKER TANKS	
DEEP TK	897.0 cum
2 FOT (P)	181,2 cum
3 FOT (S)	194,5 cum
FO SEET #1	35,6 cum
FO SETT #2	35,6 cum
FO SERV #1,	30,5/29,0 cum
FO OWERF#1	59,5 cum
TOTAL	1433,9 cum
DOT (P)	55.3 cum
DOT (S)	55.3 cum
1 DO Srv	126,6
2 DO Srv	8,5 cum
TOTAL	126,0 cum

WINCHES / WINDLASS / ROPES / EMERGENCY TOWING			
	FWD	AFT	PARTICULARS
WINCHES	3 (S.dr)	4 (S.dr)	HAULING SPEED 4.8 m/min
MRG Ropes	7	7	64mm Polyprop, 55 t
Winch BHC	49 T	49 T	
WINDLASS	2	NIL	HAULING SPEED 4.8 m/min
FIRE WIRE	2	1	28mm
ANCHOR	2	0	12 SHACKEL (each)
EMG. TOWING	1	1	SWL 100T
			TYPE :SMIT 70 mm/100 MT
			SWL 100T
			TYPE :TOWING 70mm/100MT

ST PUMPING SYSTEM				
PUMPS	NO.	CAPACITY	HEAD	RPM
CARGO D/WELL	10	425 m3/h	130 mlc	2710
CARGO D/WELL	6	250 m3/h	130 mlc	1900
STRIPPING PUMP	NA			
CARGO EDUCTOR	NA			
BALLAST CENTRIF	2	1000 m3/h	26 m	150
BALLAST ED'TR	1	160 Cm/hr	10 m	

LIFE BOATS	
2 x 30 Persons	
Type:	

MANIFOLD ARRANGEMENT	
Distance of cargo manifold to cargo manifold	2050 mm
Distance of cargo manifold to vpr. return manifold	4000 mm
Distance of top of rail to centre of manifold	700 mm
Distance of manifold to ship side	4400 mm
Distance of manifold from keel	19,90mtrs

CARGO HOSE CRANES	
1 Set x 12.0 T	
IG / VAPOR EMISSION / VENTING	
IG BLOWER CAPACITY	3920 CUM/HRS
P/V VALVE PR./ VAC. SETTING	1450 / -350
P/V BREAKER PR./VAC. SETTING	NA

Min Bow Drft:m
Blst Drft: F5.7m, A 7.5 m
MARPOL Trim: m
Propeller Immer.:6,8m

FIRE FIGHTING SYSTEM	
E/RM	CO2
PUMP ROOM	CO2
CARGO/DK AREA	Low Expansion Foam